

## GROUP 33A

# FRONT SUSPENSION

### GENERAL

#### OUTLINE OF CHANGES

The service procedures have been revised as the following parts due to the change in the crossmember.  
<2500>

- Lateral lower arm assembly
- Stabilizer bar

#### LATERAL LOWER ARM ASSEMBLY <2500>

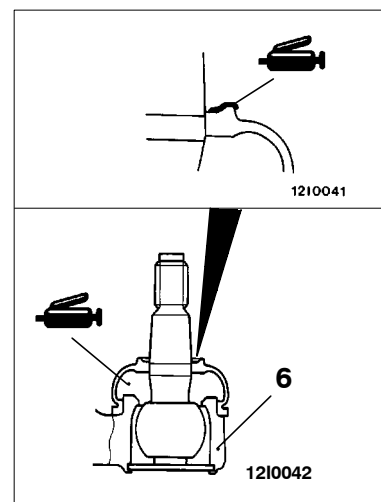
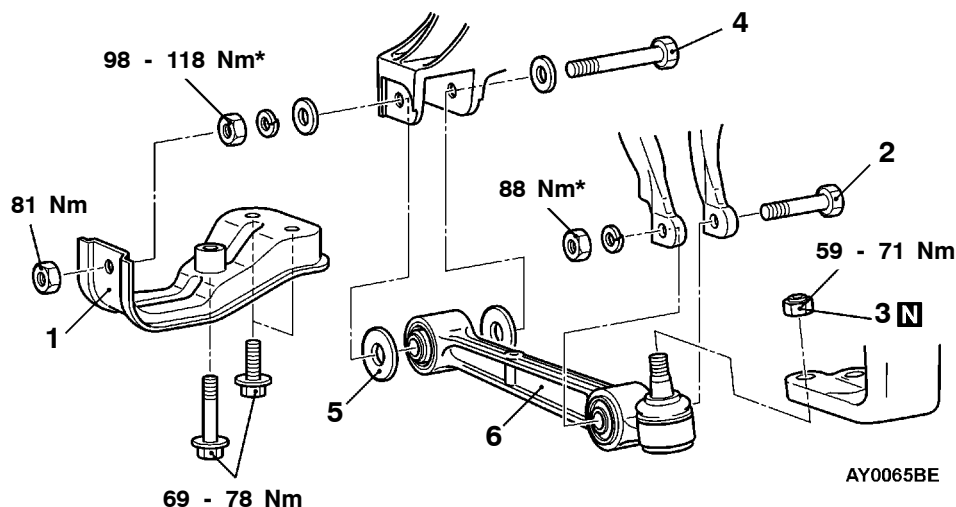
#### REMOVAL AND INSTALLATION

##### Caution

\*: Indicates parts which should be temporarily tightened, and then fully tightened with the vehicle on the ground in the unladen condition.

##### Post-installation Operation

- Check the Dust Cover for Cracks or Damage by Pushing it with Finger.
- Wheel Alignment Check and Adjustment



##### Removal steps

1. No.2 stay
2. Lateral lower arm and damper fork connection
3. Lateral lower arm and knuckle connection

4. Lateral lower arm mounting bolt
5. Stopper
6. Lateral lower arm assembly



##### NOTE

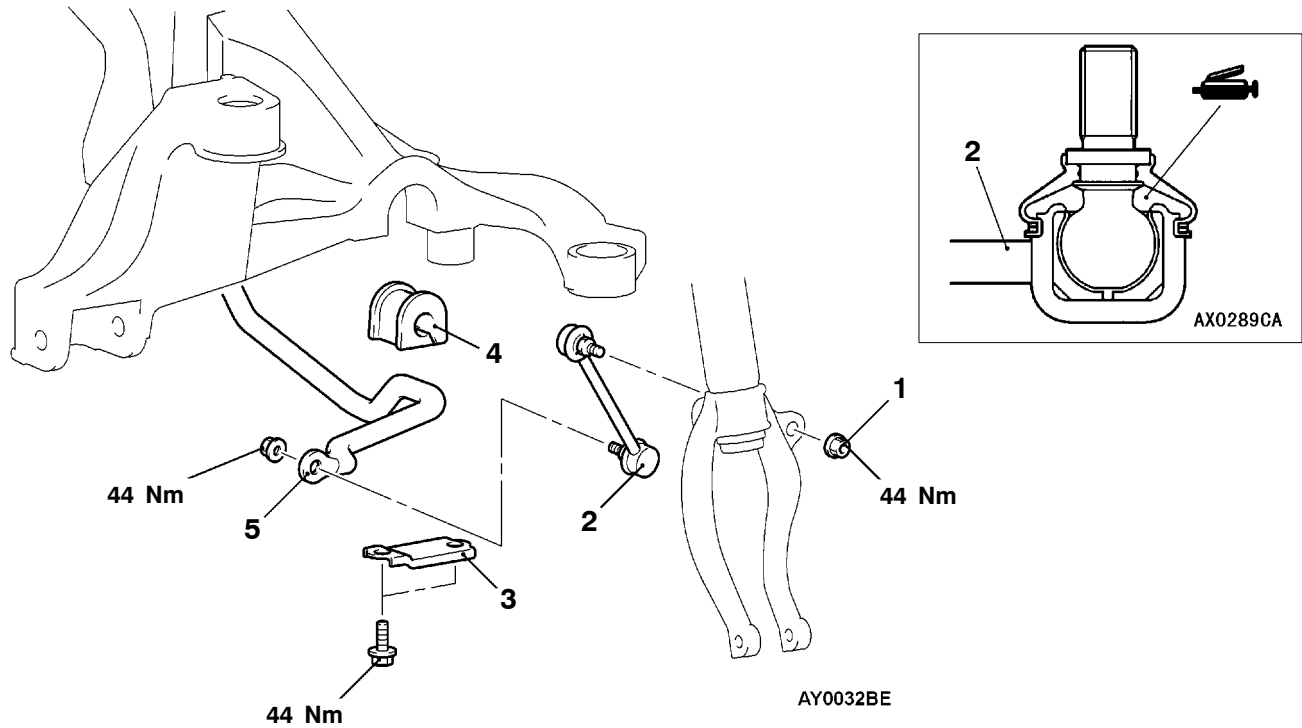
For service point, inspection, and lower arm ball joint dust cover replacement, refer to the Basic Manual.

**STABILIZER BAR <2500>****REMOVAL AND INSTALLATION****Pre-removal Operation**

- Left Side of No.1 and No.2 Stays Disconnection <L.H. drive vehicles>
- Right Side of No.1 and No.2 Stays Disconnection <R.H. drive vehicles>

**Post-installation Operation**

- Check the Dust Cover for Cracks or Damage by Pushing it with Finger.
- Left Side of No.1 and No.2 Stays Connection <L.H. drive vehicles>
- Right Side of No.1 and No.2 Stays Connection <R.H. drive vehicles>

**Removal steps**

1. Stabilizer link mounting nut
2. Stabilizer link
3. Stabilizer bar bracket

4. Bushing
5. Stabilizer bar

**NOTE**

For service point, inspection, and stabilizer link ball joint dust cover replacement, refer to the Basic Manual.